

Perfecting Wood Protection. We won't let you down



Leading the Way in Wood Protection

 **BASF**
We create chemistry

Wolman: We created modern Wood Protection



We are one step ahead in wood protection - and this for already more than a century.

Our pioneering spirit is reflected in more than 300 patents worldwide. One of the most well known innovations was a wood preservative based on copper-HDO, which made it possible for the first time to substitute chrome as the fixation additive.

Since 1980, our Sinzheim-based company has been a 100% subsidiary of BASF. This synergy breathes life into our scientific approach every day – with exclusive BASF active ingredients and technologies. Also in the future - we promise to continue our endeavour in searching new paths in wood protection.

How do you recognize the best product? By the expert who recommends it



We are the European market leader in wood protection.

Our opinion is well regarded because wood protection is a matter of trust - during consultation, sales discussions, customer service and for years following the purchase of our products.

Our expertise is not only valued by our customers - we are also actively involved in national and international expert groups where we pass on our knowledge.



State-of-the-art Wood Protection requires state-of-the-art service

Requirements for wood protection become increasingly more complex.

As a customer of BASF Wolman you can rely on our Wolman package: outstanding products together with comprehensive technical and scientific advice ensure that you get the best value. We combine our experience with the very latest expertise in the field.

Comprehensive Wolman service

- Expert technical advice
- Scientific approach to find solutions
- Support in the implementation of guidelines and legal requirements
- Help with maintaining high quality standards
- Seminars and audits with regard to environment, health and safety
- Comprehensive logistics service to ensure the highest supply delivery reliability

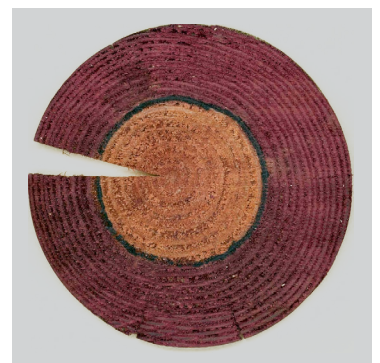
High-quality treatment – nothing else will last

If you want to protect wood effectively, you need a good preservative.

Some criteria still have to be adhered to in order to achieve the right level of quality. Deep, even penetration is essential for a high-quality Vacuum Pressure Treatment. In order to protect timber against blue stain the optimal concentration of the preservative

depends on the desired duration of protection, the timber species and the local climate.

We have both the expertise to advise you and the products to help you achieve the best possible results.



Full penetration of sapwood
with Wolmanit® CX as a sign
of high-quality treatment

There is no single solution for everything, but we can find a solution for anything

Protection of wood against:

Mould and sapstain	Wood-destroying organisms (fungi/insects)		Fire	
Temporary protection	Use class 1 and 2: inside – dry or wet	Use class 3 and 4: outdoor – in and above ground	Improved fire classification	
Anti-Sapstain chemicals used to protect wooden pallets, packaging and container floors against blue stain and mould during warehousing and transport	Dip Treatment chemicals to protect construction timber under the roof without weathering	Glue line treatment for wood composites such as OSB, particle board or plywood to protect against termites and fungi	Vacuum Pressure Treatment chemicals to protect timber such as decking, fencing, playground equipment, carparks, poles	Fire retardant products to improve the reaction to fire behavior of timber and plywood and the fire resistance of construction elements such as doors etc.
Sinesto® B Sinesto® AS-5 Wolsin® FL-35	Wolmanit® QB Wolsit® EC Diffusit®	Xyligen® 30F Wolsit® T	Wolmanit® CX Wolsit® KD	Wolmanit® Firestop Interdens® Exterdens®

Additives

We offer a wide range of additives:

- Wood preservative for cuts and drills
- Wax additive to prevent swelling and cracking
- Additional protection against mould

Cut end treatment: Wolmanit® C&T
Mould protection: Wolmanit® AM-5
Defoamer: Wolmanit® ProAdd DF
Water-repellent additive: Wolmanit® ProAdd WR

Colours

We offer many attractive shades for wood for outdoor use (application in Vacuum Pressure Treatment or Dip Treatment). Depending on the application, both pigment- and dye-based systems are available.

Wolmanit® ProColor

Our researchers and developers are always searching – for innovations

Working closely together with BASF specialists leads to a head start in innovation.

We are developing and testing new ideas, active ingredients and formulations on a daily basis - focusing always on the most environmentally friendly substances. If a new formulation looks promising in

laboratory tests, this is only the beginning. We are only certain of having set a new standard in wood protection after extensive application testing and outdoor trials.



Responsible care is guiding our daily work

Our ambition has always been the development of the most effective formulations and products for wood protection. But we are also pioneers in making improvements in the area of environment, health and safety – something that is intrinsic to our work. Our customers can also benefit from our expertise: we offer a broad range of training sessions and audits including safety-relevant topics.

- We are committed to responsible care and sustainable development.
- We maintain an in-house department for product safety and registration.
- We have an outstanding know-how with the implementation of REACH and the Biocidal Products Regulation (BPR).
- We are committed to audit and guide our customers on site for the proper use and application of our products with respect to Environment, Health and Safety upon request.
- Wolman was awarded BASF's Construction Chemicals Responsible Care site award.



Leading the Way in Wood Protection through scientific expertise and partnership

We are happy to share our expertise with our customers.

We prefer to answer your questions as part of an in-depth, one-to-one conversation, as is appropriate for experts. If you would like to find out more in advance, please visit our website for some interesting details: www.basf.com/wolman.

This information reflects our present knowledge and experience. The purpose is to inform interested parties about our products and their use and should not be construed as guaranteeing specific properties of products described or their suitability for a particular application, nor as providing complete instructions for use. The information implies no guarantee for product and shelf life properties, nor any liability or other legal responsibility on our part. Any existing third party intellectual property rights must be taken into consideration.

Application and usage of our products are beyond our control and are the sole responsibility of the user. The user is not released from the obligation to test the suitability and applications for the intended purpose. In addition, the currently valid version of our general terms and conditions for sale apply.

Use wood preservatives safely. Always read the label and product information before use.